

Sacred Vision Sacred Space



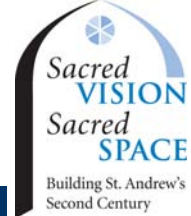
Building St. Andrew's
Second Century

Outline



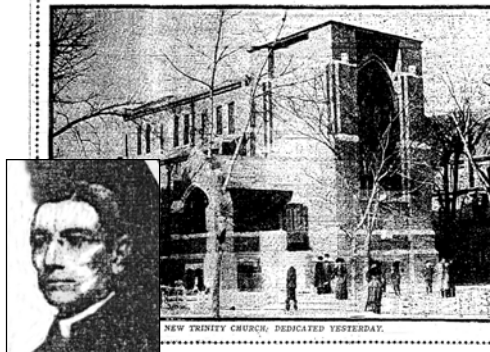
- Where we have been.
- Sacred Vision Sacred Space Ministry Program.
- Highlights of Expansion Plans.
- Schedule.
- Financial Plan.
- Our challenge.

Where we have been



- Trinity Memorial Church designed by Ralph Adams Cram.
- Erected in 1908.
- Dedicated: January 18, 1909.

THE DAILY NEWS: DENVER, COLORADO.
TRINITY MEMORIAL CHURCH DEDICATES
NEW HOME WITH IMPRESSIVE CEREMONY



3

St. Andrew's Modern History



- Parish church until 1970s then became an abbey for the Order of the Holy Family.
- Membership declined and facilities fell into disrepair.
- Became mission of St. John's Cathedral in 1988.
- Rev. Constance Delzell became Vicar in 1991.

4

An earlier time

Sacred
VISION
Sacred
SPACE

Building St. Andrew's
Second Century

5



Alternative looks (1980)

Sacred
VISION
Sacred
SPACE

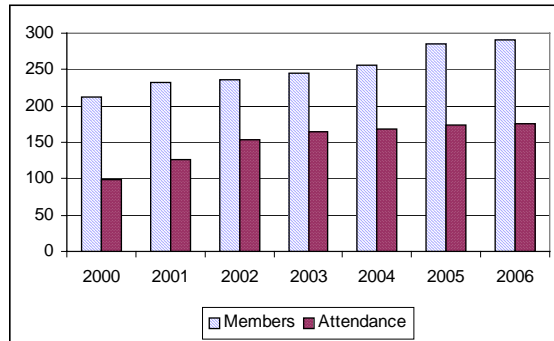
Building St. Andrew's
Second Century

6



Recent Parish Development

- Regained Parish status in 2000.
- Growth has been steady, but attendance has leveled off, in part, limited by space.



7

Expanding and Needed Ministries

- Worship
- Outreach
- Music
- Adult Education
- Children's/youth Education
- Evangelism (sharing)



8

Ministry Program



- *Evangelism*: Expand the worshipping community with a Nave seating approximately 200 while facilitating St. Andrew's liturgical practices.
- *Evangelism*: Provide handicap accessibility to the Nave, Great Hall, and restrooms.
- *Music, Christian Education, Outreach*: Provide multipurpose, flexible space. Provide large room to accommodate congregation-wide events.
- *Congregational Life*: Find permanent home for the bell tower.

Building Ministry, not buildings

9

Imagine:



- 3 worshipers in the community where 2 are now (expanded Nave seating).
- Accessibility to the Nave and undercroft for those who find stairs to be a barrier.
- A multipurpose space, in addition to our current Great Hall, for:
 - Adult and/or children's programs
 - Choir vesting and warmup/rehearsal
 - Outreach program activities
 - Multiple functions simultaneously

10

Imagine:



- Bell safely mounted.
- Renovated and accessible women's and men's bathrooms in the undercroft.
- Sacristy in the main church building.

11

Highlights of Expansion Plans

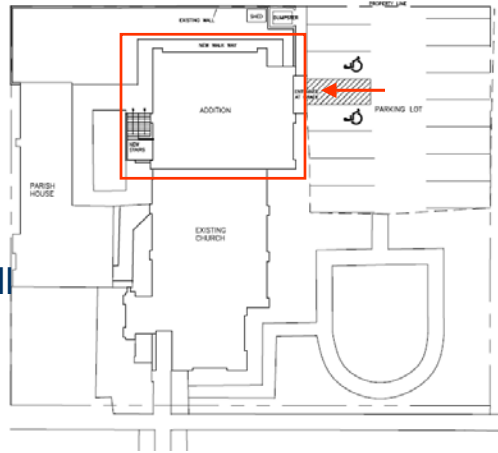


- The plans will continue to evolve; the plans shown are not final, but convey the scale and response to the Ministry Program.
- Plans include:
 - Site plan
 - Floor plans
 - Elevation views

12

Site Plan

- Addition expands building
- Handicap accessible entrance
- Onsite parking will be restriped (will request City variance)



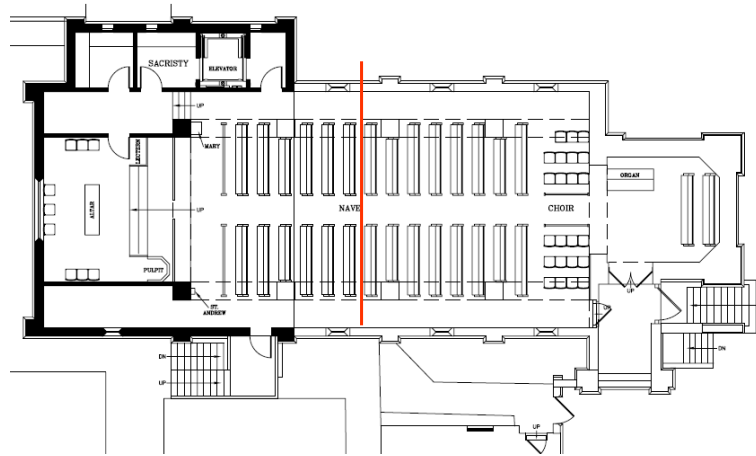
13

Nave Highlights

- Seating capacity increased by 70 from 135 to 205
- Handicap accessibility
 - Nave
 - Communion rail
 - Sanctuary
- Sacristy

14

Nave Concept



15

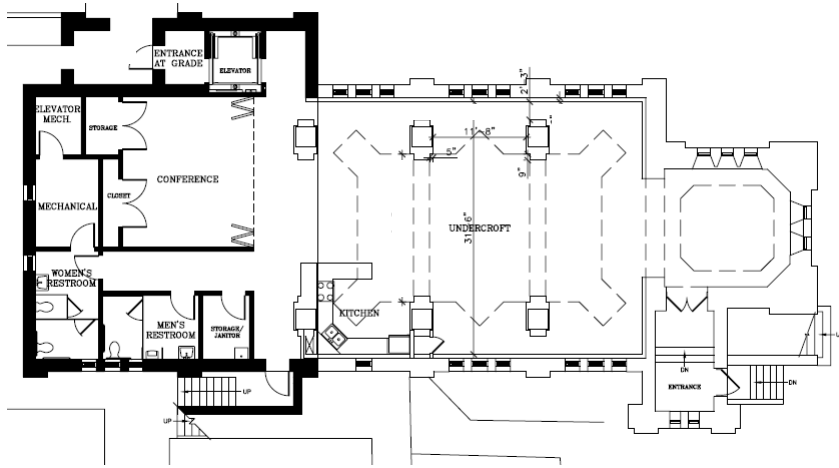
Undercroft Highlights

- Multipurpose room, in addition to current Great Hall, for:
 - Choir vesting and warmup/rehearsal
 - Adult and/or children's programs
 - Outreach program activities
 - Multiple functions in undercroft simultaneously
- Effectively expanded Great Hall
- Handicap accessibility
 - Undercroft
 - Restrooms
- Renovated restrooms

16

Undercroft Concept

Sacred
VISION
Sacred
SPACE
Building St. Andrew's
Second Century

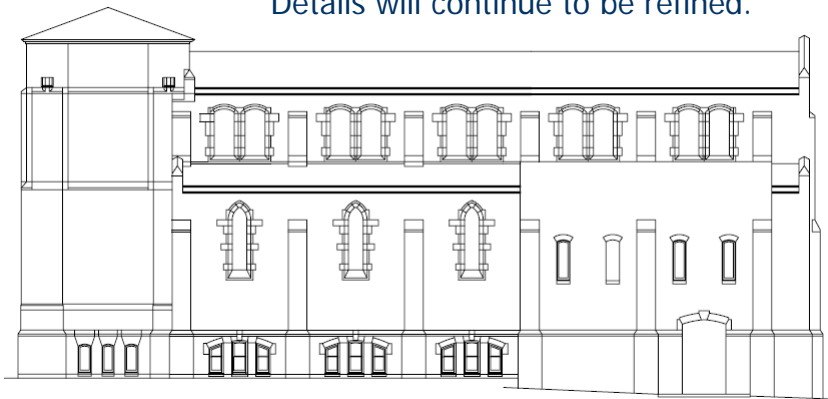


17

North Elevation

Sacred
VISION
Sacred
SPACE
Building St. Andrew's
Second Century

Details will continue to be refined.



18

Schedule



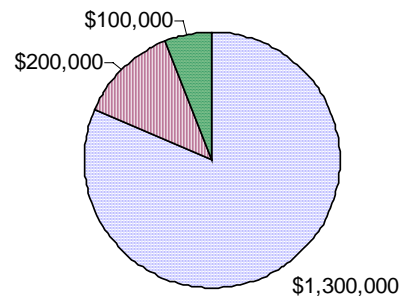
- Design Activities (Architect:HDB/Cram and Ferguson)
 - Schematic Design: through June 2007
 - Design Development: July – October 2007
 - Construction Documents: Nov. 2007-March 2008
- Approvals (June - September 2007)
 - City development office
 - Landmarks Preservation Commission
 - Diocesan standing committee
- Bidding/Contracting: March – April 2008 (100th anniversary of original construction)
- Construction: May 2008 – April 2009 (1 year) (100th anniversary of building dedication January 2009)

19

Financial Plan: Project Cost (\$1.6 million)



- Construction
- Design & Approvals
- Miscellaneous
 - Fundraising
 - Loan acquisition
 - Furnishings
 - Contingency



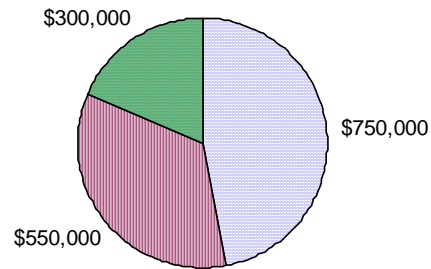
□ Construction ■ Design ■ Miscellaneous

20

Financial Plan: Resources



- Capital Campaign Pledge Payments (3 years)
- Loan
- Endowment



Capital Campaign Loan Endowment

21

Our Challenge: Give Thanks



- Give thanks for the blessings and opportunities that St. Andrew's represents in our life.
- Celebrate the ministry of Mother Connie.
- Create the future, with God's help.

22

Our Challenge: Reflection and Prayer



Make a meaningful decision by prayerfully seeking God's will in your life.

- In a personal way, will this commitment make a difference in me?
- Is this a decision I am willing to take time to pray about?
- Is this a decision I will have a significant conversation about with my family and larger family of faith?

23

Our Challenge: Reflection and Prayer



- Will I think creatively about what I am capable of giving?
- Will this giving decision involve a sense of sacrifice in my life?
- Am I discovering a joy in giving?

Each has his or her own financial capacity, but we can all take this journey of faith together, with God's help.

24

According to the grace of God given to me, like a skilled master builder, I have laid a foundation, and others are building upon it. Each builder must choose with care how to build upon it. For no one can lay any foundation other than the one that has been laid; that foundation is Jesus Christ.

1 Corinthians 3:10-11